

CENTRE FOR THE STUDY OF SUBSTRUCTURED LOSS (EST. 2009)

APPLIED GRIEF AND BEREAVEMENT RESEARCH

20 CAMDEN STREET, SUITE 200 TORONTO, ON M5V 1V1 CANADA | TEL: +1 (845) 481 17 17 | EMAIL: RESEARCH@SUBSTRUCTUREDLOSS.ORG
WEB: SUBSTRUCTUREDLOSS.ORG | FACEBOOK: [@SUBSTRUCTUREDLOSS](https://www.facebook.com/SUBSTRUCTUREDLOSS) | VIMEO: [/SUBSTRUCTUREDLOSS](https://www.vimeo.com/SUBSTRUCTUREDLOSS)
ENQUIRIES/NEWSLETTER: SUBSTRUCTUREDLOSS.ORG/CONTACT

VISIT OUR WEB PAGE, FOLLOW US, AND SUBSCRIBE TO OUR NEWSLETTER FOR MORE INFORMATION ON PUBLIC PROGRAMMING, RESEARCH EFFORTS, INITIATIVES, AND EVENTS.

CENTRE FOR THE STUDY OF SUBSTRUCTURED LOSS

Established in 2009, the **CENTRE FOR THE STUDY OF SUBSTRUCTURED LOSS** is a Canadian organization dedicated to the development of applied grief and bereavement research. Documented through the use of practice-based/led methods within art and comprised of work from an interdisciplinary network of creative and technical practitioners; the **CENTRE FOR THE STUDY OF SUBSTRUCTURED LOSS** is committed to the advancement of the arts and sciences; providing programming in support of education; public and professional engagement; and the development of field research in partnership with local, national, and international academic bodies, institutions, foundations, and non-profits.

BERLIN SUMMER 2019-1

OF LINES AND FAMILIAR THRESHOLDS

This Summer 2019 the **CENTRE FOR THE STUDY OF SUBSTRUCTURED LOSS** is proud to host international interdisciplinary artists and researchers Bastian Schwentek (DE) and Heather Sincavage (US).

Of Lines and Familiar Thresholds is a study of movement and metaphoric space; utilizing emotional assets to navigate the edges of the unknown.

In Glare, Bastian Schwentek meditates on the games we play with reality and the shared emotive realm of presence and loss. Heather Sincavage surveys the residue of personal trauma and the act of establishing emotional boundaries in response to archetypes one encounters throughout life in the body of work titled, The Dividing Line [shifts]. A precarious process, Sincavage uses the body as a tool to perform within internalized space while accumulating fragile emotional thresholds in relation to learned circumstances.

In examining personal processes and adjusting to internal environments through this accumulation; the encounter is gradually defined and a complex study of boundaries is woven Of Lines and Familiar Thresholds.

Works installed and artists present.

BERLIN SOMMER 2019-1

OF LINES AND FAMILIAR THRESHOLDS

Das Zentrum für das Studium des Substrukturellen Verlusts präsentiert: "Of Lines and Familiar Thresholds"

Als Gastgeber In diesem Sommer 2019 ist das Zentrum für das Studium des Substrukturellen Verlusts stolz die internationalen interdisziplinären Künstler und Forscher Bastian Schwentek (DE) und Heather Sincavage (US) präsentieren zu können. "Of Lines and Familiar Thresholds" ist eine Studie über Bewegung und den metaphorischen Raum, welches emotionale Aspekte benutzt, um bis an die Grenzen des Unbekannten zu navigieren.

Bastian Schwentek meditiert über Spiele die wir mit der Realität spielen und die gemeinsame emotionale geteilte Wirklichkeit von Gegenwart und Verlust. Heather Sincavage untersucht in ihrer Arbeit "The Dividing Line [shifts]" die Auswirkung des persönlichen Traumas und der Akt emotionale Grenzen zu setzen, als Antwort auf die Archetypen die man im Leben begegnet. In einem prekären Prozess benutzt Sincavage den Körper in einer Performance als Werkzeug in einem internen Raum, während Sie fragile emotionale Grenzen in Relation zu erlernten Umständen setzt.

Indem persönliche Prozesse untersucht werden und interne Umgebungen durch diese Akkumulation angepasst werden, wird die Begegnung langsam definiert und es wird eine komplexe Studie über Grenzen "Of Lines and Familiar Thresholds" gewebt.

Die Künstler sind anwesend.

ARTIST & RESEARCHER 1

Bastian Schwentek (DE)

Contact: bastian.schwentek@outlook.com

Bastian Schwentek, originally from Berlin-Wilhelmsruh, works with sound and video collages, often drawing from themes of fantasy, arrangement, mental health, and more recently spirituality. This is his first foray into using installation as a medium.

STATEMENT

The work titled, Glare, a video installation completed while in residence at the **CENTRE FOR THE STUDY OF SUBSTRUCTURED LOSS**, features an animation resembling a screen recording in which a player navigates through a point-and-click adventure game. Its environments lead viewers through forest pathways, apartment blocks, gardens and tunnels; illustrating the surreal and familiar, menacing and comforting. In watching the player aimlessly wander these confines, the video meditates on what we try to turn the world into, the threshold between finite and infinite games, and signals.

Glare is a work in progress.

WORKS

Bastian Schwentek (DE)

Glare
Video and sound sequence; installation.
Variable dimensions and duration.
2019

Bastian Schwentek (DE)

Study for Glare; artefacts.
Candles on concrete.
Variable dimensions.
2019

ARTIST & RESEARCHER 2

Heather Sincavage (US)

Contact: heather@heathersincavage.com

Heather Sincavage is an interdisciplinary artist using drawing, sculpture, installation and performance as part of her studio practice. Her work uses the body for measuring power dynamics, trauma within the human condition, as well as the artist's role in activism.

Originally from Southeastern Pennsylvania, she received her BFA from Tyler School of Art, Temple University in Philadelphia, Pennsylvania and her MFA from School of Art, University of Washington, Seattle, Washington. She is an alumna of The Vermont Studio Center as well as numerous other residencies and fellowships. Her work has been published in Surface Design Journal and exhibited in over 40 solo and group exhibitions across the United States and throughout Europe. Most recently, she performed for Itinerant at the Queens Museum in New York, Alive at Satellite during Miami Art Week, and as part of the Tempting Failure festival in London. In 2018, Heather received the Tanne Foundation Award.

She currently is the Director/Curator of the Sordoni Art Gallery at Wilkes University and Assistant Professor of Art.

STATEMENT

The Dividing Line [shifts] is a series of performative gestures that investigates the residual effects of trauma. As an intersection of gendered labor (or 'women's work') and Somatics, performance action imply the cognitive struggle involved in average daily activity while presenting both the strength and fragility of evolving social structures. As a navigation of emotional boundaries encountered with archetypes most women face, the work examines how and in what circumstances boundaries are constructed, what they protect, where they fail, and what by-products emerge from their failures. The Dividing Line [shifts] recognizes that these structures are erected as a result of relational circumstances, change throughout life, and exist simultaneously in varying integrities. The simple act (of cracking an egg and using its shell as a brittle material for this metaphorical wall) comments on the precarious process of protecting one's Self while encountering external models for learned behaviour.

WORKS

Heather Sincavage (US)

The Dividing Line [shifts]
Investigation [shift I]; 3:06 min
Edification [shift II]; 2:27 min
The Collapse [shift III]; 00:37 sec
Aggregation [shift IV]; 3:16 min
Cultivation [shift V]; 1:14 min
Performance to video; installation.
Duration: 10:41 min
2019

Heather Sincavage (US)

It's Fragile Presence - study for The Dividing Line [shifts]; artefacts.
Reassembled egg shells on concrete.
Variable dimensions.
2019

LAYOUT

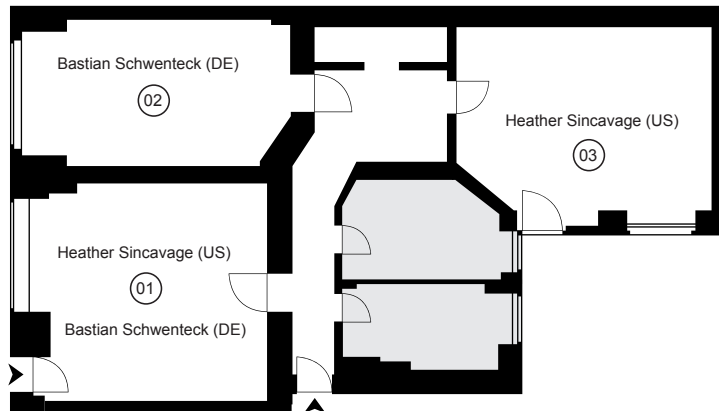
CENTRE FOR THE STUDY OF SUBSTRUCTURED LOSS PRESENTS OF LINES AND FAMILIAR THRESHOLDS

VISITOR INFORMATION:

Lite-Haus Galerie Mareschstr. 4, 12055 Berlin GER
01 AUG 2019: 7:00pm-10:00pm - Opening Reception
02 AUG 2019: 12:00pm-9:00pm - Open Gallery
03 AUG 2019: 12:00pm-8:00pm - Open Gallery
04 AUG 2019: 12:00pm-6:00pm - Open Gallery

DIRECTIONS:

S Sonnenallee (S-Bahn) | Trains: S9, S41, S42, S45, S85 | Buses: 171, M41, N79



▲ ENTRANCE

ROOM 01 / RAUM 1 - Heather Sincavage (US) | Bastian Schwentek (DE)

ROOM 02 / RAUM 2 - Bastian Schwentek (DE)

ROOM 03 / RAUM 3 - Heather Sincavage (US)

The **CENTRE FOR THE STUDY OF SUBSTRUCTURED LOSS** wishes to thank Debbie Davis, Dalida Kibir, Lite-Haus staff, and residents Bastian Schwentek and Heather Sincavage for their contributions and efforts.