

# LiTE-HAUS

LiTE-HAUS offers an intensive artist residency program and exhibition in August for artists to expand and improve their practice in a serene and professional environment in the heart of Berlin's vibrant art scene. This residency will be conducted in English language. Artists of all ages, and at any stage of their careers may apply - from students to established artists. The program includes work stations, guidance, critique, connection with art professionals, insight into the inner workings of a culture space, and working directly with the program team leaders.

The ideal candidates are artists who want to find or strengthen their artistic voice while also gaining knowledge about how art spaces operate.

This residency is open to international artists, not just Berlin residents. Lodging is available at LiTE-HAUS depending on which option you choose. We have two private rooms with a shared bathroom and kitchen. The rooms serve as both studio and sleeping quarters and are converted into exhibition space. Travel expenses are the artist's responsibility. If you choose not to stay at LiTE-HAUS, you must find and pay for your own lodging.

Residency artists have the opportunity to present their work in a short group exhibition at the end of the residency, although artists are not *required* to participate. Local artists will join the residency artists in this exhibition.

This is a self guided residency. Artists may work off site or in LiTE-HAUS during the residency. We encourage artists to work at our space as often as possible to engage with the team and with fellow creators, to take full advantage of what this residency offers.

**Do not wait for the deadline to apply. Artists will be accepted or declined as we review applications. Artists who are accepted and pay their deposit will be confirmed, even if the deadline has not been reached.**

Apply by: July 3 (no entry fee) LINK: <https://forms.gle/PJdjfNc7ovkRhShK7>

Notification sent to selected artists: July 4

Registration + 50% deposit due by: July 17

Fee balance due by: August 14

Residency: August 18 - September 3

Art installation: September 1+ 2

Opening Night (aka Vernissage): September 3 6pm-9pm

Exhibition: September 3,4,5

Dismantle + move out: September 6

COST (BERLIN ARTISTS) €400 (50% €200 *non-refundable* deposit due upon registration)

COST (no lodging): €800 (50% €400 *non-refundable* deposit due upon registration)

COST (with lodging): €2,200 (50% €1100 *non-refundable* deposit due upon registration)

See next pages for more details about LiTE-HAUS and funding opportunities.

# LiTE-HAUS

## ABOUT LiTE-HAUS

LiTE-HAUS is a non-profit art and cultural space in Neukölln. Our mission is to provide space for artists, and connect them with the local community, while also combating all forms of racism and discrimination in the art world. We offer a platform for artists looking to integrate into the Berlin art scene. We aim to foster cross-cultural communication within the Berlin community through collaborative art and open discussion, providing a public space for interdisciplinary dialogue between art, society, and politics. Many of our exhibitions, events, projects, and workshops address environmental issues, with our understanding of "environment" extending beyond natural-ecological concerns to include the diverse cultural-ecological environment of modern cities like Berlin.

Berlin is a city known for its rich cultural diversity, and LiTE-HAUS uses art and culture as tools for bridging these communities together. The space is not just an exhibition venue but a hub for creativity, research, and social/political discourse. Its exhibitions and projects often highlight marginalized and underrepresented artists, and workshops blend various art disciplines to encourage collaboration.

The choice of a Neukölln location reflects the core values of LiTE-HAUS: equality, diversity, fairness, and democracy. Since its inception, the space has welcomed hundreds of artists who have exhibited or participated in projects, attracting visitors from across Germany, Europe and beyond. LiTE-HAUS is a pro-democracy, pro-equality, gender-neutral, and inclusive space that celebrates diversity and multiculturalism. We are committed to maintaining a safe and respectful environment for all. Hate speech, harassment, autocratic ideologies, fascist propaganda, racism, and any form of discrimination will not be tolerated. Individuals who fail to adhere to these values will be asked to leave. Furthermore, those with a history of such behaviors will not be permitted on the premises. We take care to ensure all artists can feel safe while allowing for freedom of expression.

## ABOUT THE TEAM:

LiTE-HAUS was founded by New York artist Debbie Davies in 2016 and is run by Davies and her husband Dmitrii Kamyshkov. The team is directly involved in all aspects of the organization and will be leading the residency program. Davies' role is primarily curatorial, while Dmitrii specializes in installation. The couple will share their insights and expertise gained over years of operating this artist-run initiative.

# LiTE-HAUS

## THE RESIDENCY PROGRAM

### INTENTION:

Residency artists each work independently, organizing their own time and work, but also participate in a collaborative framework, and attending meetings. The residency is about exchanging with other artists. Artists receive curatorial support and guidance; encouraging the development of the artist's work and the chance to share ideas and opinions with other creatives. LiTE-HAUS is known for its highly democratic process of curating exhibitions, focusing on the artwork rather than the artist's background. We also developed a streamlined process for submissions, art selection, and installation which we will share with residency artists. Through this, artists will leave the residency with a well-rounded experience that enhances their practice with professionalism and confidence. Further, since LiTE-HAUS is open to the public as a galerie, artists have direct access to exhibiting their work, and building a relationship with the galerie team for possible future exhibition opportunities and collaboration. Workshops will include artist statements, website advice, organizational skills, and installation methods. We will also go on field trips to other cultural spaces.

### LOCATION:

LiTE-HAUS is located in Rixdorf - a historical enclave in the cool, multicultural neighborhood of Neukölln. Located near several public transportation lines, you are never far away from visiting other project spaces, galleries, and museums. This is a walkable area, with many restaurants, shops, outdoor recreational areas, and entertainment venues.

### SPACE:

LiTE-HAUS has three bright white pristine rooms. At the end of the residency, artists will exhibit in the galerie. Artists have a desk and chairs in a shared space. The space is not a rustic art studio, but rather a modern workspace for instruction, research, and creating - suitable for various "cleaner" mediums such as drawing, collage, photography, digital art, design, research, literature, arts & crafts, video, illustration, painting, small sculpture, textiles, or assemblage. The *production* of large sculptural artworks is not possible. Artists have access to the space daily 9am-8pm but there is some flexibility.

# LiTE-HAUS

## AMENITIES:

LiTE-HAUS has a kitchenette that artists may use for food preparation, and a bathroom with a full size tub artists are welcome to use. Smokers may use our private garden terrace. You can see photos of the facilities and the space on our website under "ARTIST RESIDENCIES" or see the last page of this document. Overnight accommodation is available for artists who choose that option. Otherwise, you will receive a letter of invitation which will make it easier to find apartment rental, if you don't stay in a hotel or hostel.

## EQUIPMENT:

We have high speed internet with wifi throughout the space. Equipment includes an inkjet printer, projector with screen, wireless speakers, large smart television, extra monitors for laptops, and a digital recorder. Artists must provide their own laptops.

## MATERIALS:

*Specialty* art supplies are the responsibility of the artist. However, we maintain a supply of basic art materials that artists may use such as primer, brushes, blades, stretching tools, and more. Depending on the artist's medium, we may be able to supplement additional materials.

## FUNDING:

This residency is not funded, and we understand how difficult it can be for artists to pay for it. Below is a link to some organizations that provide funding directly to artists. However, most applications for grants must be submitted to the grantor well in advance. LiTE-HAUS is privately funded primarily by the owners, who volunteer their time. Since we are a non-profit organization we receive some donations from the public, and sometimes grants. We also get revenue from art sales commission. You may have heard about funding cuts in Berlin, so unfortunately grant funding is very limited right now.

[LINK TO GRANTS LIST](#)

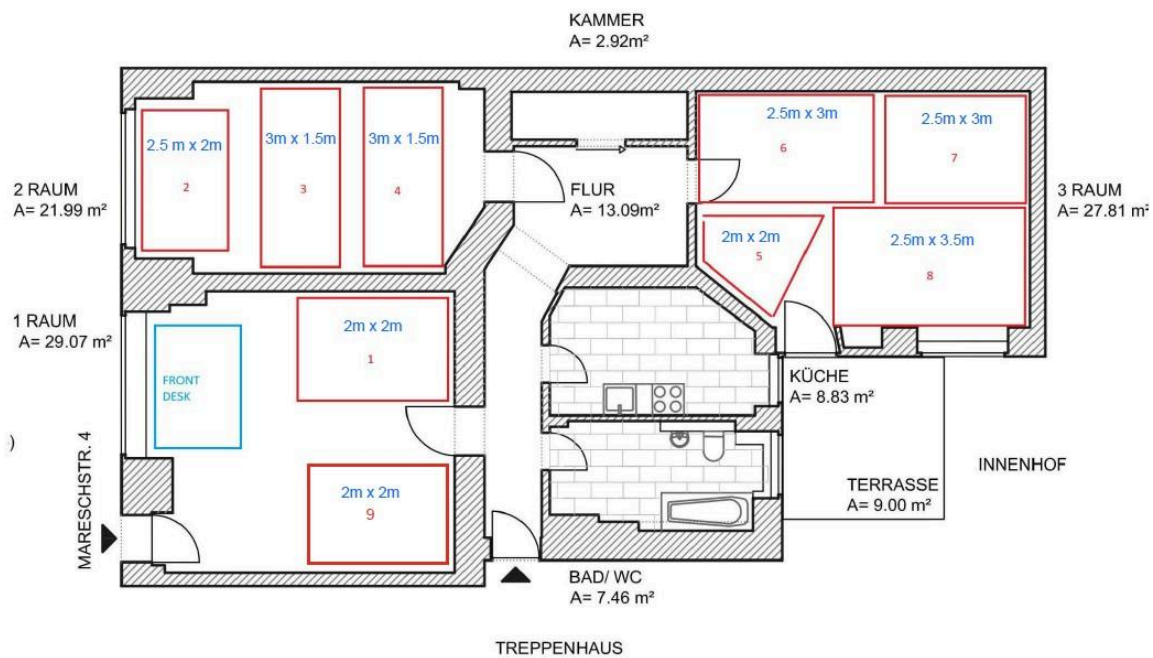
# LiTE-HAUS

## ARTIST WORK STATIONS

Artists will work in an open shared space, and have their designated area to work with a desk and chairs. Artists may use the walls to mount their work in progress, and there is floor space for more sculptural work.

The space is thoroughly heated, and the windows open to the street or the garden depending on your work station location.

Here are some photos and the floor plan. Each workspace is slightly different in size but can be adjusted based on the artist's medium.



Raum 1 is the main entry to the space, where the galerie team works. There is one workspace available (#1) there approximately 6 sq.m.

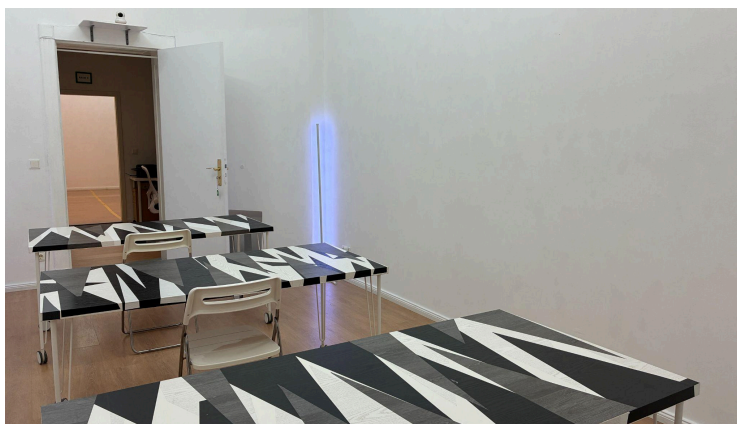
Raum 2 can accommodate up to 3 artists, but if the artists work with sculpture, then 2.

Raum 3 leads to the garden, and has 3 - 4 work stations, depending on the medium. This is also where we will have our group meetings since the TV is in that room.

The following pages show photos of the rooms, and some of the exhibitions to better show scale. This space has very high ceilings and bright lighting, including some floor and desk lamps.

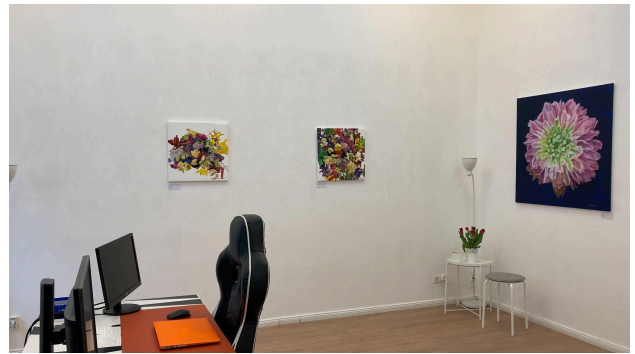
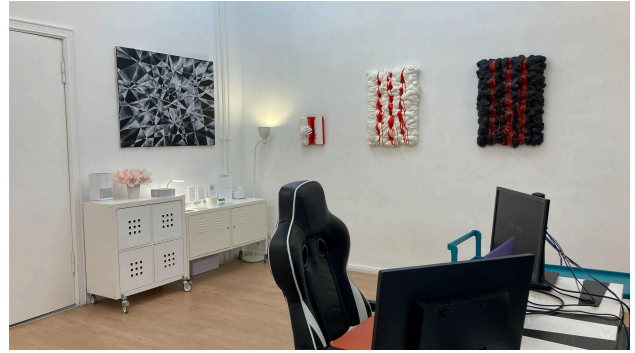
# LITE-HAUS

RAUM 2



# LITE-HAUS

## RAUM 1



# LITE-HAUS

## RAUM 3

